

## Model : DTH - 895

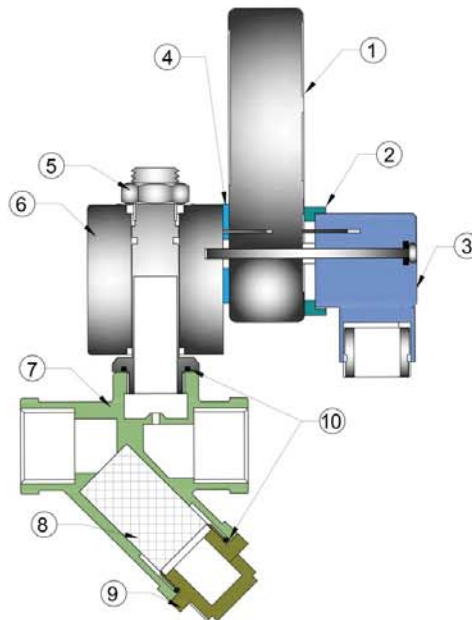
### Features

- ▶▶ Timer based electrically operated valve to drain moisture automatically from Air Compressor / Air Receiver Tank
- ▶▶ Very moderate rates
- ▶▶ Reducing operating costs

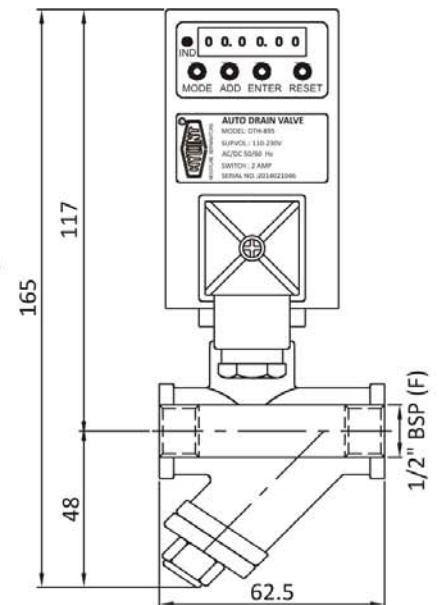
### Technical Specification

|                              |  |
|------------------------------|--|
| Model                        | DTH - 895  |
| Size                         | 1/2" Female Thread ( BSP )   |
| Efficiency                   | 99.99%   |
| Working Pressure             | 10 Kg/cm <sup>2</sup> / 21 Kg/cm <sup>2</sup> / 60 Kg/cm <sup>2</sup>                  |
| Coil Voltage                 | 12, 24 & 36V AC / DC Low Voltage<br>48, 110, & 230V AC / DC High Voltage               |
| Critical Ambient Temperature | 20 °C & 85 °C  |
| Humidity Condition           | Less than 85%  |
| Mounting                     | Indore only, Spare Weather Proof Box with LED indicator available for outdoor mounting |
| Manual Override              | Reset  |
| Off Time                     | 1 second to 99 hours, 59 minute, 59 second ( Adjustable )                              |
| On Time                      | 1 second to 10 minute ( Adjustable )   |
| Maintenance                  | Strainer to clean on clogging  |
| Spare Coil / Timer           | Available  |
| Timer                        | Digital ( Adjustable )   |

| No. | Part Name     | Material      |
|-----|---------------|---------------|
| 1   | Digital Timer | ABS Plastic   |
| 2   | Gasket        | NBR           |
| 3   | DIN Connector | DIN 43650A    |
| 4   | Gasket        | NBR           |
| 5   | Check Nut     | Steel Plated  |
| 6   | Coil          | Std. Material |
| 7   | Body          | IC CF8        |
| 8   | Cartridge     | S. S. Mesh    |
| 9   | Plug Ring     | IC CF8        |
| 10  | 'O' Ring      | NBR           |



( A Spare Weather Proof Box with LED indicator is also available with this product on request for outdoor installation which is IP - 65 quality compliant )



### General Description

The model DTH - 895 automatically drains the moisture from the collected bowl mounted in the Moisture Separator. It can also be installed below the Air Compressor / Air Receiver Tank / Air Dryer to drain the moisture collected in it. Its "OFF" time range to set between 0.5 second to 99 hours 59 minute 59 seconds and "ON" time range to set between 0.5 second to 10 minute. It has a mesh in the strainer which will filter dust / rust particles (If any) which can be cleaned from time to time. It works under the working pressure of 10 Kg, 21 Kg & 60 Kg. It comes in different voltage between 12V-230V AC / DC Low Voltage & High Voltage. A Spare Weather Proof Box with LED indicator is also available on request

### Timer Function

Upon application of power to the input terminal, the solenoid is energized and the cycle time begins. At the end of the present ON time, the solenoid energized until the cycle time is over. At that time a new cycling time continues until power is removed from the input terminal.